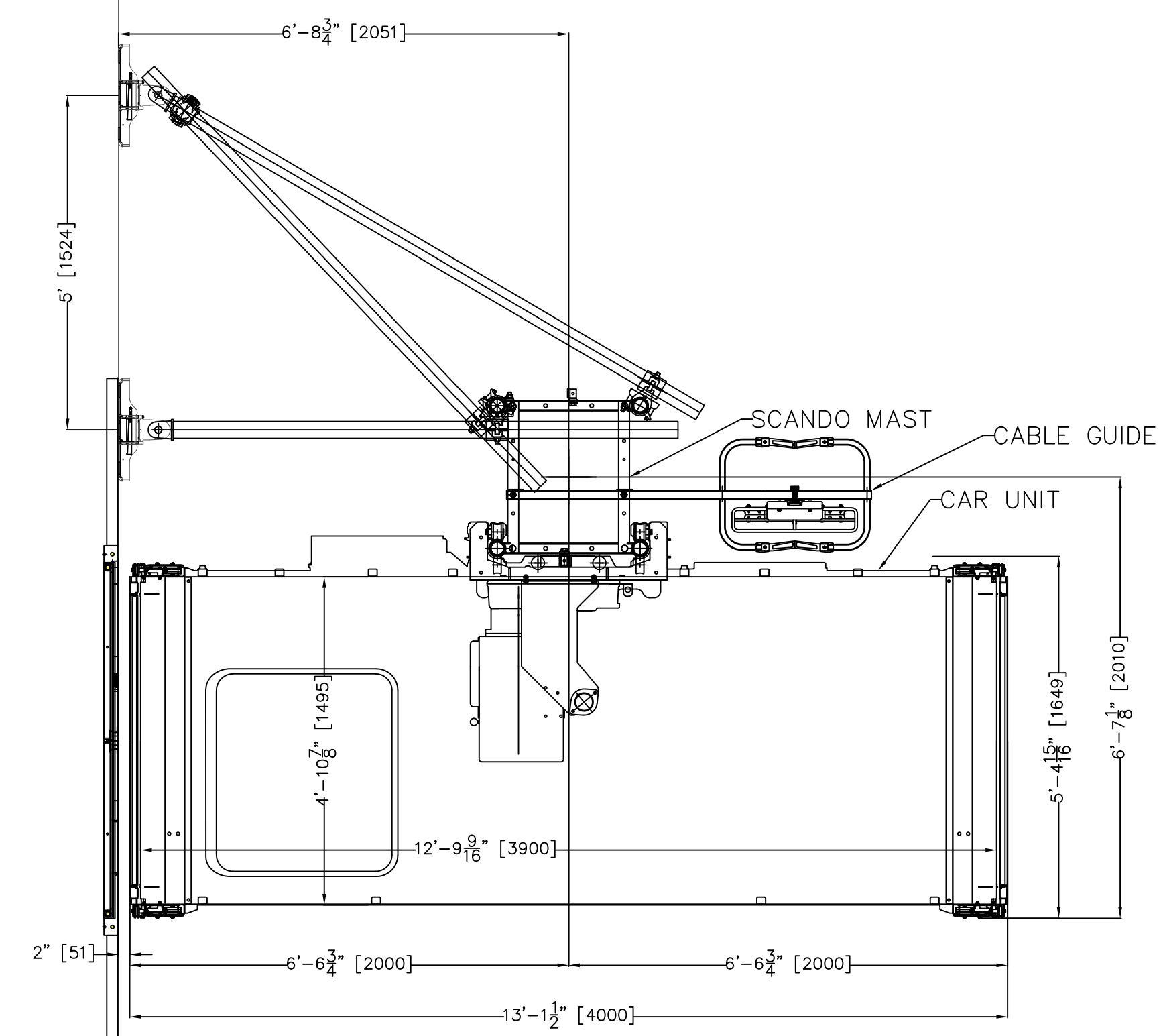
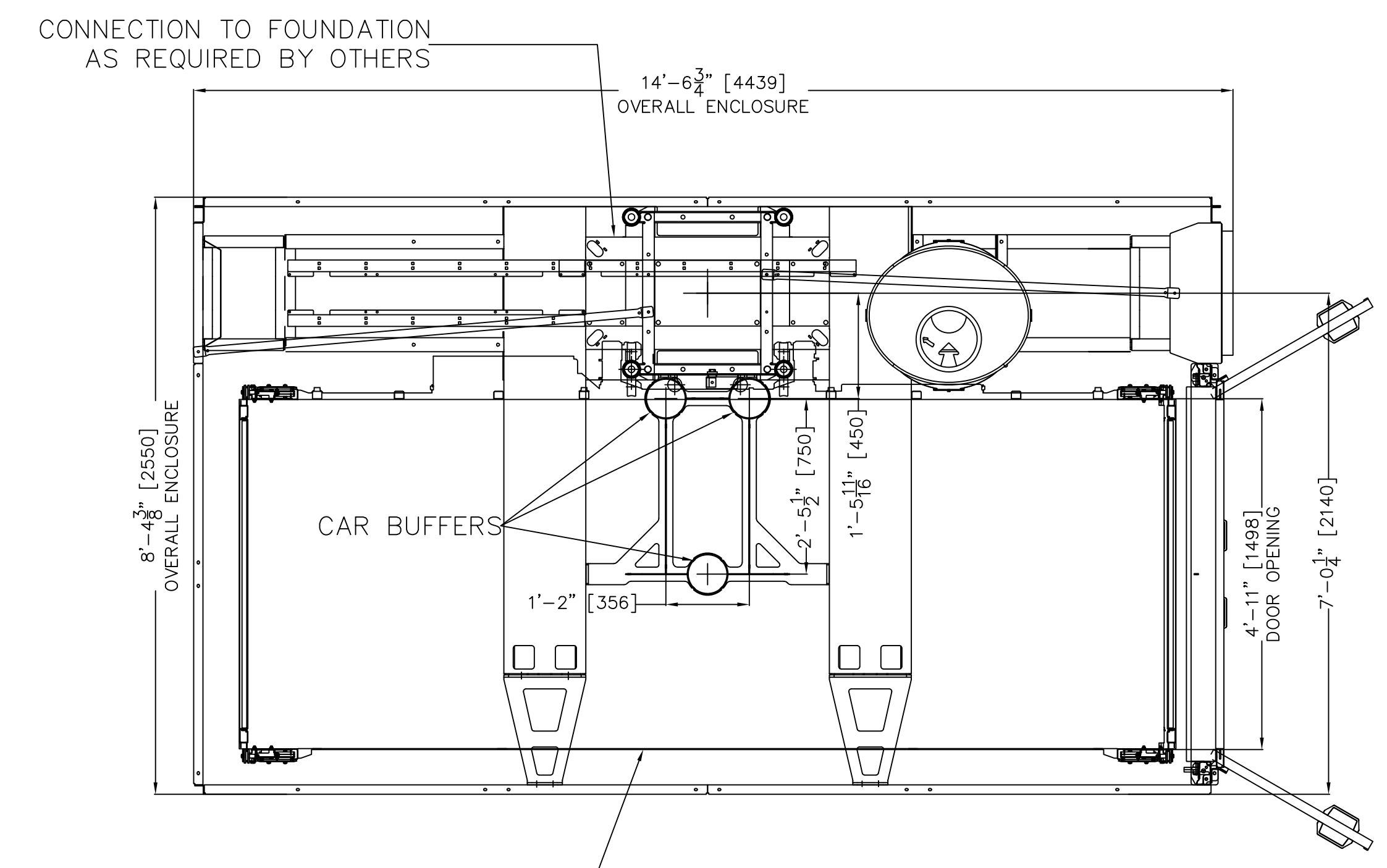


ELEVATION VIEW



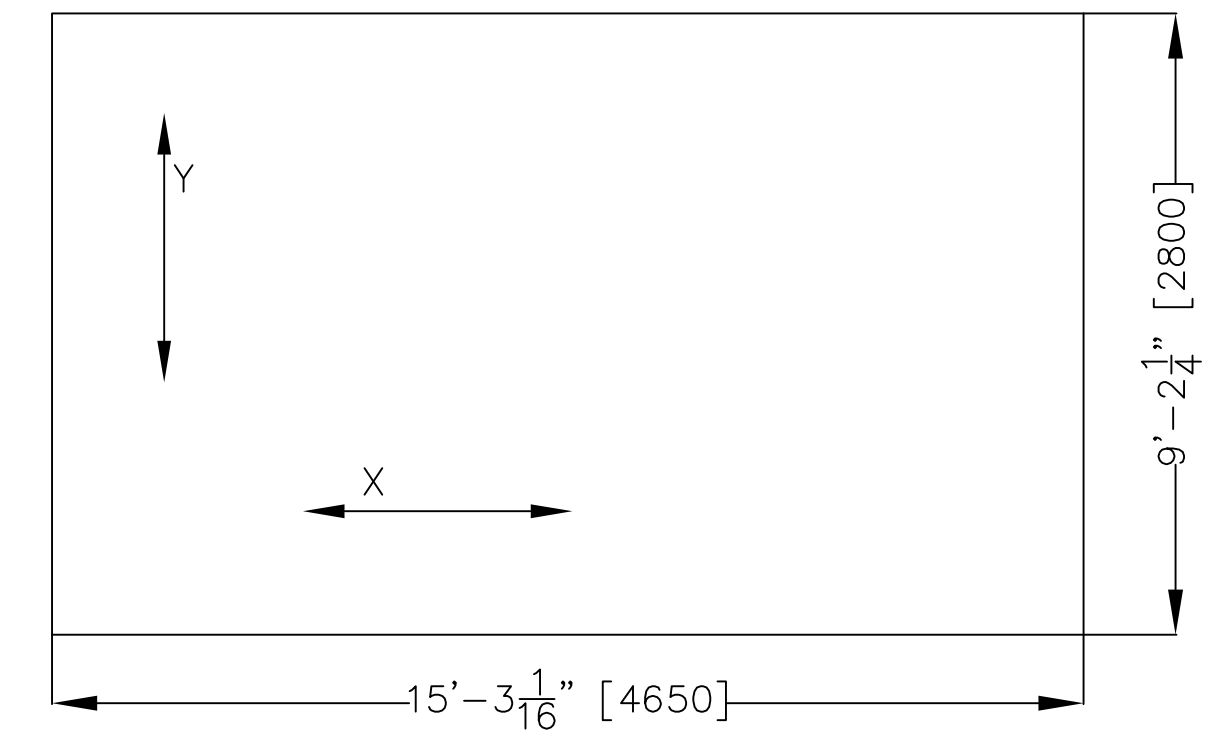
INTERNAL CAR DIMENSIONS: 4'-10 7/8"W X 12'-9 9/16"L X 7'-6 1/2"H

PLAN AT LANDINGS

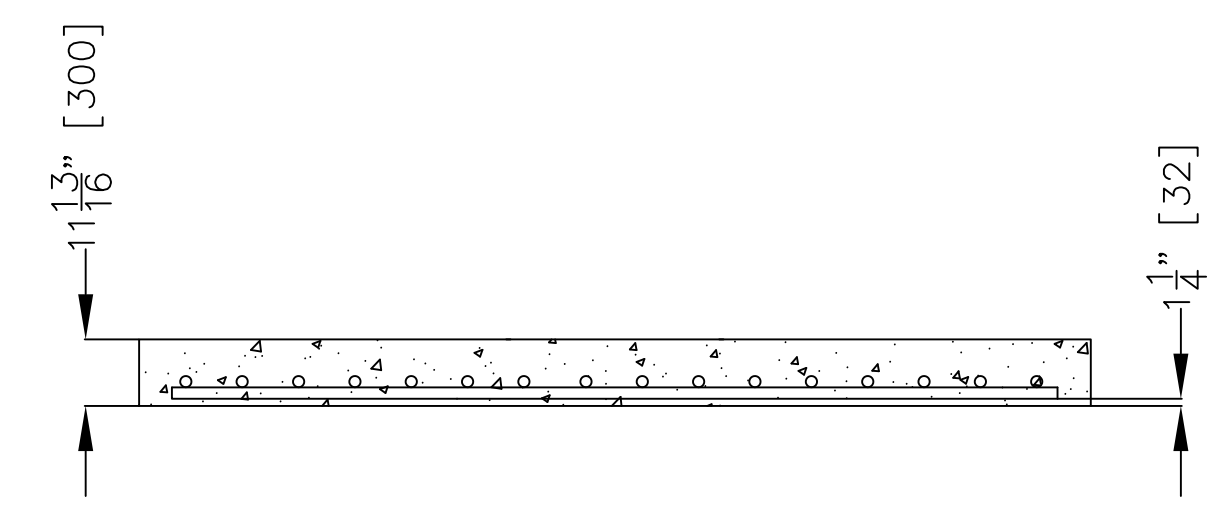


PLAN AT BASE

MINIMUM FOUNDATION REINFORCEMENT REQUIREMENTS  
 X - X  
 #5 REBAR AT 10" C/C  
 Y - Y  
 #5 REBAR AT 7" C/C  
 3625 PSI CONCRETE

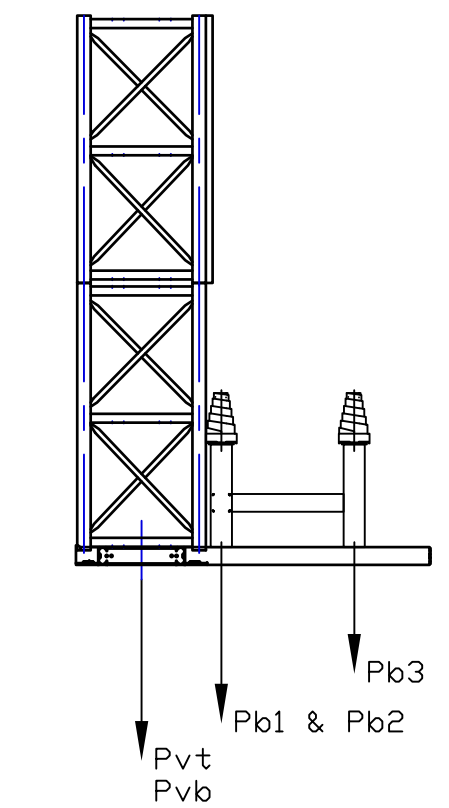


FOUNDATION PLAN VIEW



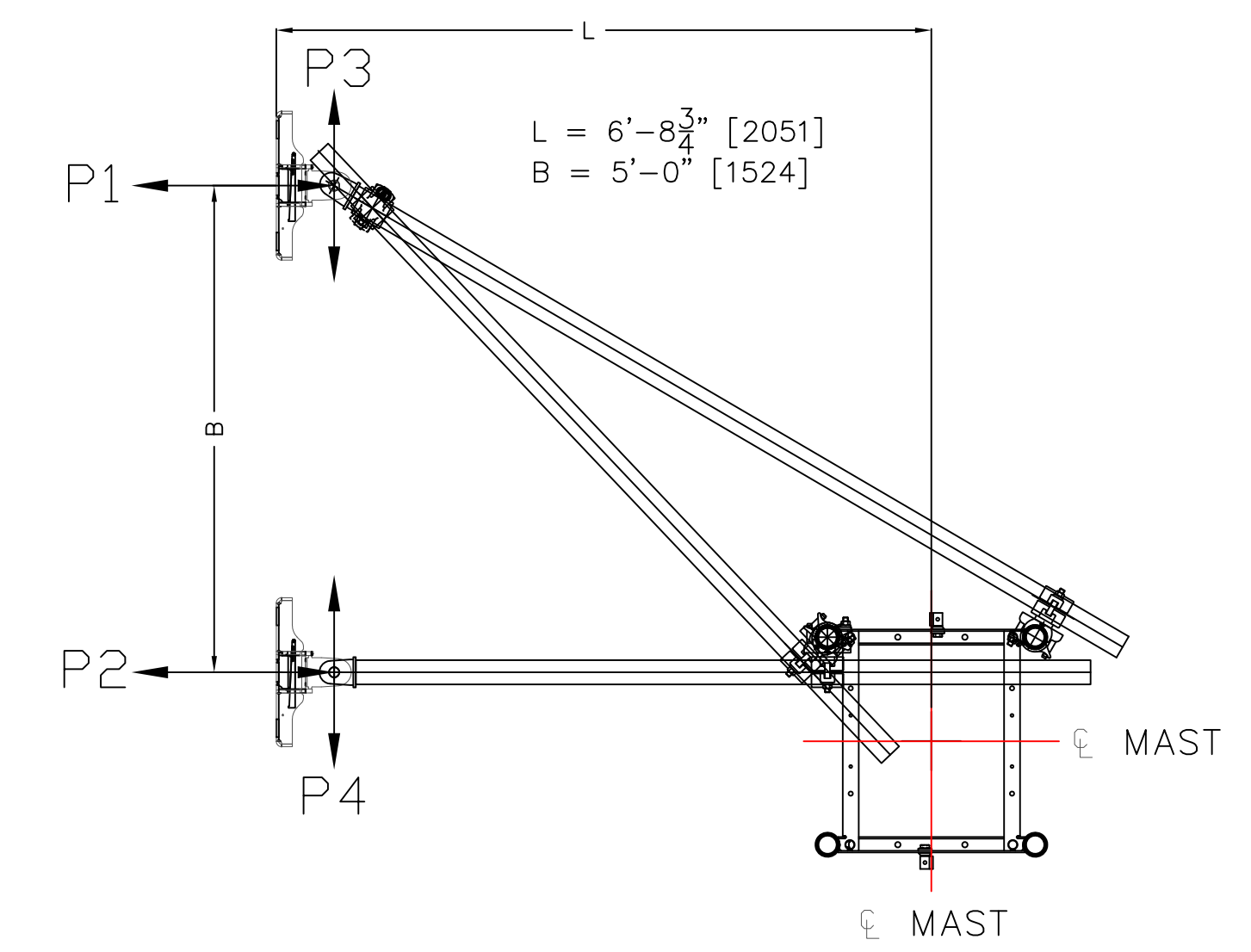
FOUNDATION SIDE VIEW

NOTE: VALID FOR MAST HEIGHTS UP TO 500'

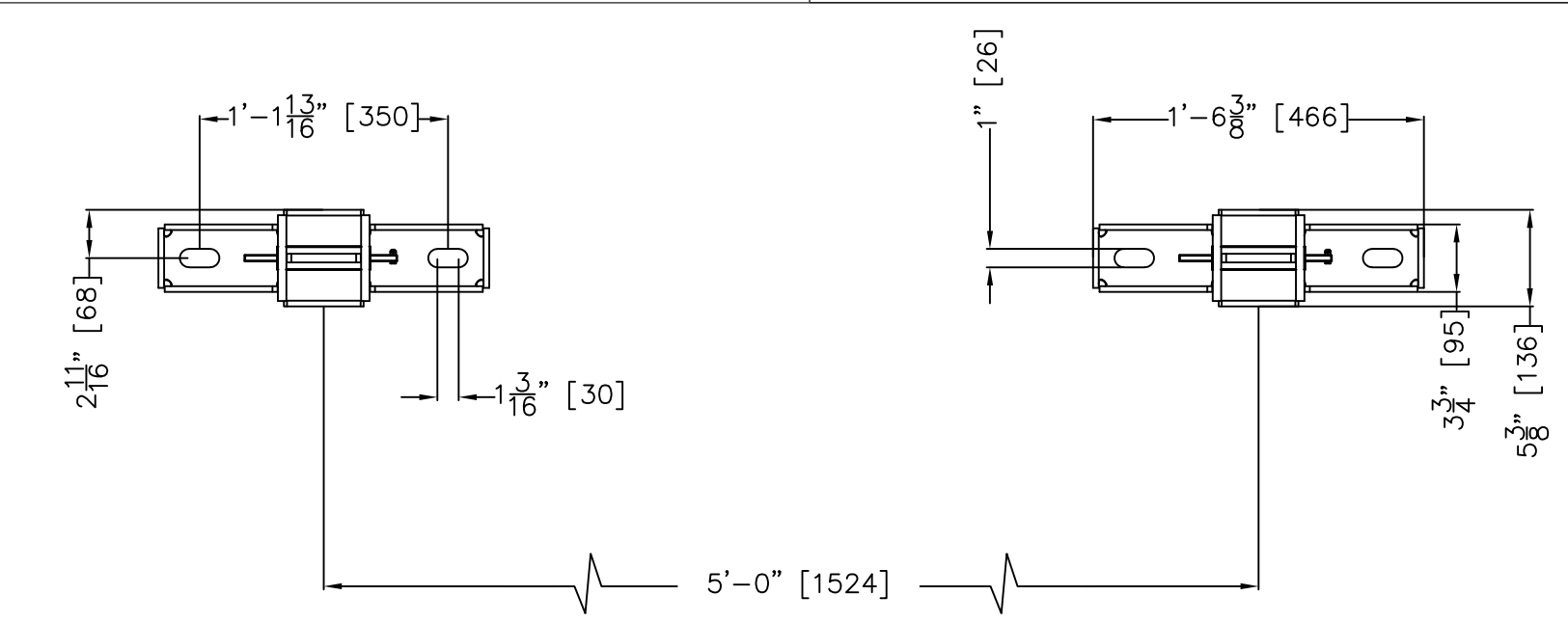


LOAD CASE 1 NDRMAL OPERATION Pvt = 30.6 KIPS	LOAD CASE 2 BUFFER IMPACT Pb = 60.6 KIPS Pb1, Pb2, Pb3 = Pb/3 Pvb = -20.4 KIPS MAX LOAD = 60.6 KIPS
TOTAL LOAD = 30.6 KIPS	

CASE 1: TOTAL LOAD ON BASE FRAME FROM WEIGHT OF MAST, CAR, AND INCLUDING DYNAMIC FACTOR  
 CASE 2: TOTAL LOAD ON BASE FRAME FROM CAR(S) STRIKING THE BUFFER(S)  
 CASE 1 AND CASE 2 DO NOT OCCUR SIMULTANEDUSLY BASED ON MAST HEIGHT OF 170'



TYPE S1A-76 TIE DETAIL



MAXIMUM ANCHOR FORCES

- P1 = 7.0 KIPS
- P2 = 7.8 KIPS
- P3 = 5.5 KIPS
- P4 = 0.8 KIPS

MACHINE TECHNICAL DATA SPECS	
MACHINE TYPE	ALIMAK SCANDO 650 32/39
CONFIGURATION	SINGLE
LENGTH	12'-9 1/2"
LIFTING HEIGHT	150'-0"
CAPACITY	7100 LBS / CAR
RATED SPEED	175 FT/MIN
MOTORPACK TYPE	VFC
NUMBER OF MOTORS	3 x 11kW
POWER SUPPLY REQUIREMENTS (PER CAR)	
VOLTAGE	480V, 3 PHASE
BREAKER SIZE	100A
FREQUENCY	60 HZ
STARTING CURRENT	91A
POWER CONSUMPTION	66 kVA

COMPONENT WEIGHTS	
BASE ENCLOSURE (W/ COMPLETE CAR)	7610 LBS
CAR WITH DOORS	3607
MOTORPACK (VFC)	1965 LBS
MAST SECTION (SINGLE)	254 LBS

PROJECT NOTES

- TIE IN LOADS SHOWN WERE CALCULATED BASED ON WIND CODE ASCE 7-10; EXPOSURE C. MAXIMUM IN SERVICE WIND SPEED OF 40 MPH AND MAXIMUM OUT OF SERVICE WIND SPEED OF 110 MPH.
- CONCRETE EXPANSION ANCHORS THAT FAIL TO MEET THE REQUIREMENTS OF EITHER MINIMUM EMBEDMENT OR SET TENSIONING SHALL BE REMOVED AND NEW ANCHORS INSTALLED HAVING A DEEPER EMBEDMENT OR LARGER DIAMETER WHERE POSSIBLE.
- ABANDONED EXPANSION BOLT HOLES ARE TO BE FILLED WITH 5000 PSI NON-SHRINK GROUT.
- ALL MAST BOLTS AND HARDWARE SCREWS TO HAVE LOCKNUTS.
- ERECTOR NOTE - ON SITE CONDITIONS SHALL GOVERN. VARIATIONS TO BE REPORTED TO ALIMAK GROUP USA, INC. PRIOR TO CONTINUATION OF WORK.
- ERECTOR TO MAKE USE OF PLUMB BOBS, DROP LINES, LASERS, SPIRIT LEVELS AND SIMILAR TOOLS TO INSURE DIMENSIONAL ACCURACY.
- MODIFICATIONS OF FURNISHED MAST TIE INS NOT ALLOWED WITHOUT PRIOR APPROVAL OF ALIMAK GROUP USA, INC.
- ADEQUATE FOUNDATION TO SUPPORT FOOTPRINT AS SHOWN IN PLAN AT BOTTOM LANDING. SEE DATA ON THIS DRAWING FOR FOUNDATION FORCES.
- ADEQUATE SUPPORT FOR GUIDEMAST FASTENING PER TIE IN SCHEDULE. SEE DATA ON DRAWING FOR GUIDEMAST FORCES.
- BASE ELEVATION = 0'-0". TOP LANDING ELEVATION = 150'-0".

**ALIMAK**  
 CONSTRUCTION DIVISION  
 457 NATHAN DEAN BLVD, SUITE 105-322, DALLAS, GA 30132  
 TELEPHONE (678) 402-1004 TELEFAX (678) 623-0452

ALIMAK GROUP USA, INC.

REV	REVISION REMARKS	DATE
A	FIRST DRAWING	7/31/17
B	DRAWING DETAILS UPDATED	3/13/19
-		
-		

THE INFORMATION CONTAINED IN THIS DOCUMENT IS THE SOLE PROPRIETARY PROPERTY OF ALIMAK GROUP USA, INC. THE EXPRESS WRITTEN CONSENT OF ALIMAK GROUP USA, INC. IS REQUIRED FOR ANY REPRODUCTION OR DISTRIBUTION OF THIS DOCUMENT.

ALIMAK SCANDO 650 SINGLE			
JOB NAME		GENERAL LAYOUT	
JOB LOCATION			
CUSTOMER NAME			
DRAWN BY	DATE	SCALE	REV
GEJ	3/13/19	NONE	B
CHECKED BY	PAGE	DWG NO.	
GEJ	1 OF 1	6503239SS	