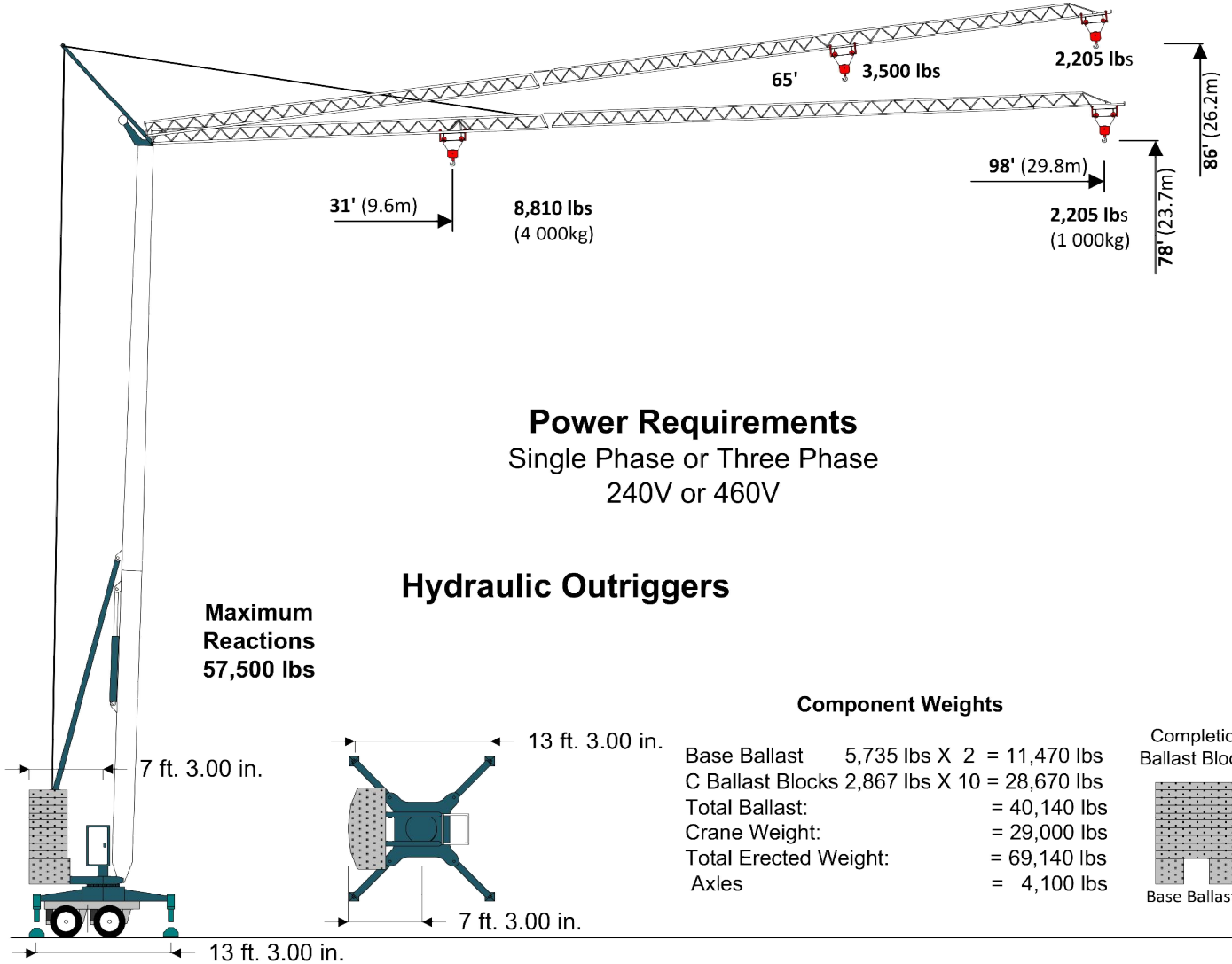




Self-Erecting Crane

V 2298/78

(2,205 lbs, 98'/78')

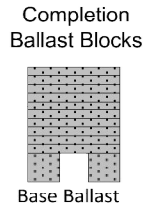


Power Requirements
Single Phase or Three Phase
240V or 460V

Hydraulic Outriggers

Component Weights

Base Ballast 5,735 lbs X 2 = 11,470 lbs
 C Ballast Blocks 2,867 lbs X 10 = 28,670 lbs
 Total Ballast: = 40,140 lbs
 Crane Weight: = 29,000 lbs
 Total Erected Weight: = 69,140 lbs
 Axles = 4,100 lbs



Hook	Ft.	31	33	39	46	52	59	66	72	79	85	92	98
Radius	Meters	9.4	10	12	14	16	18	20	22	24	26	28	29.8
2 Part	Lbs	8,820	8,196	6,565	5,450	4,650	4,040	3,565	3,180	2,865	2,600	2,375	2,205
Block	KG	4.000	3.717	2.977	2.472	2.109	1.832	1.617	1.442	1.299	1.179	1.077	1.000

Rocky Mountain Crane
 P.O. Box 2888 / 14032 HWY 55
 McCall, ID 83638
 208-500-0101
 www.rockymtncranes.com