

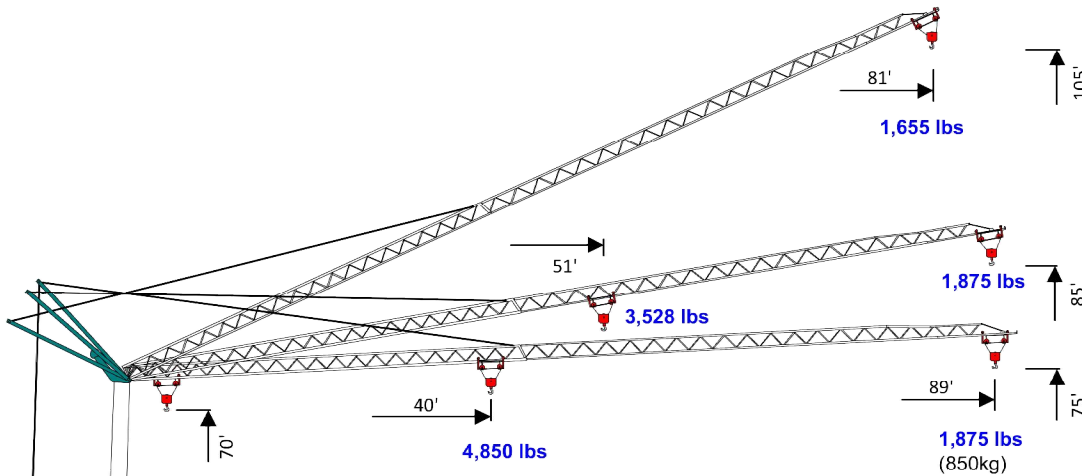


VICARIO

Self-Erecting Crane

V1989/75 (OMV 350-SR)

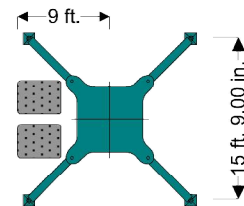
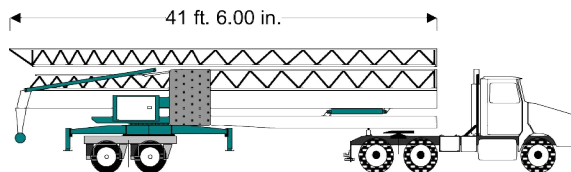
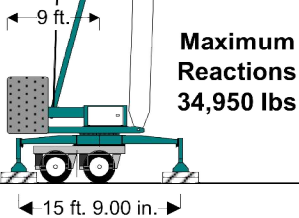
(1,875 lbs, 89'/75')



Power Requirements
Single Phase OR Three Phase
240V or 480V

Self-Contained Hydraulic Outriggers

Ballast Blocks X 2 9,300 lbs
Total Ballast: 18,600 lbs
Crane Weight: 30,900 lbs
Total Erected Weight: 49,500 lbs



Hook	Ft.	40	43	49	56	62	69	75	82	89
Radius	Meters	12.3	13	15	17	19	21	23	25	27
104'	Lbs	4,851	4,463	3,764	3,246	2,847	2,527	2,269	2,055	1,874
31.6m	KG	2.200	2.024	1.707	1.472	1.291	1.146	1.029	0.932	0.850

Rocky Mountain Crane & Equipment Rental
P.O. Box 2888 McCall, ID 83638
(208) 696-1476 Ph. / (866) 756-0090 Fax
www.rmntcranes.com