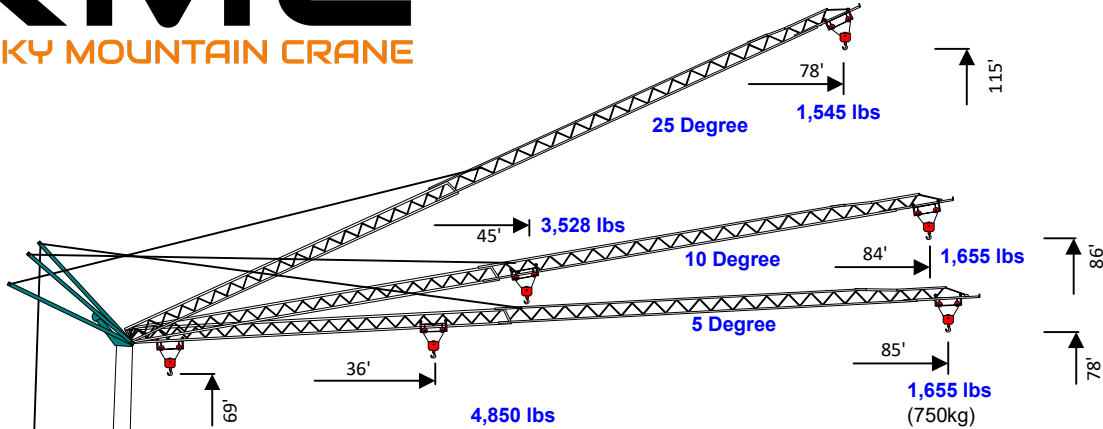


# VICARIO

## Self-Contained Self-Erecting Crane

### V 1785/78-SC

(1,655 lbs, 85'/78')



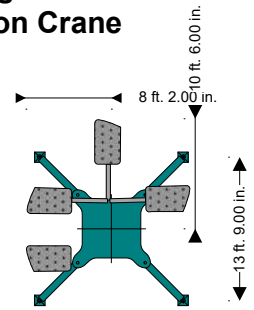
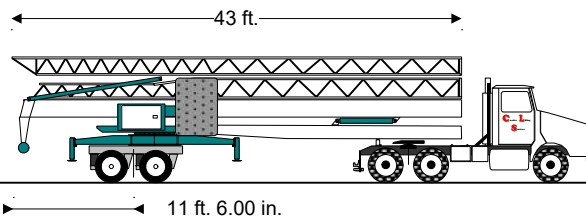
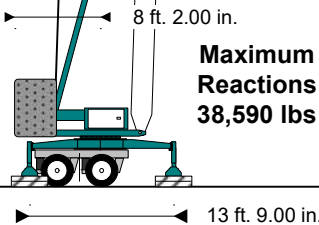
### Power Requirements

Single Phase OR Three Phase  
240V or 480V

### Self-Contained Hyd Outriggers

### Cwts Swing Forward & Travel on Crane

- Ballast Blocks X 2 9,260 lbs
- Total Ballast: 18,520 lbs
- Crane Weight: 27,520 lbs
- Axles & Hitch 4,600 lbs
- Total Erected Weight: 50,640 lbs
- Total Transport Weight: 50,640 lbs



Hook	Ft.	35	39	46	52	59	66	72	79	85
Radius	Meters	10.8	12	14	16	18	20	22	24	26
89'	Lbs	4,851	4,291	3,546	3,008	2,604	2,287	2,035	1,828	1,654
27m	KG	2.200	1.946	1.608	1.364	1.181	1.037	0.923	0.829	0.750

## Creative Lifting Services Inc.

Call Kelly or Will Phone: 303-659-8102 Fax: 303-659-5314

kelly@creativelifting.com will@creativelifting.com www.creativelifting.com