



727 RBI-FA



EN 14439-C25
FEM 1.001-A3
2000/14/CE



Simple setup



FM-Link



Power Control



ASsys



ACsys

Funzionamento e trasporto

Operation and transport - Betrieb und transport - Exploitation et transport - Accionamiento y transporte

● Reazioni in servizio
Reactions in service
Reaktionskräfte in Betrieb
Réactions en service
Reacciones en servicio

■ Reazioni fuori servizio
Reactions out of service
Reaktionskräfte außer Betrieb
Réactions hors service
Reacciones fuera de servicio

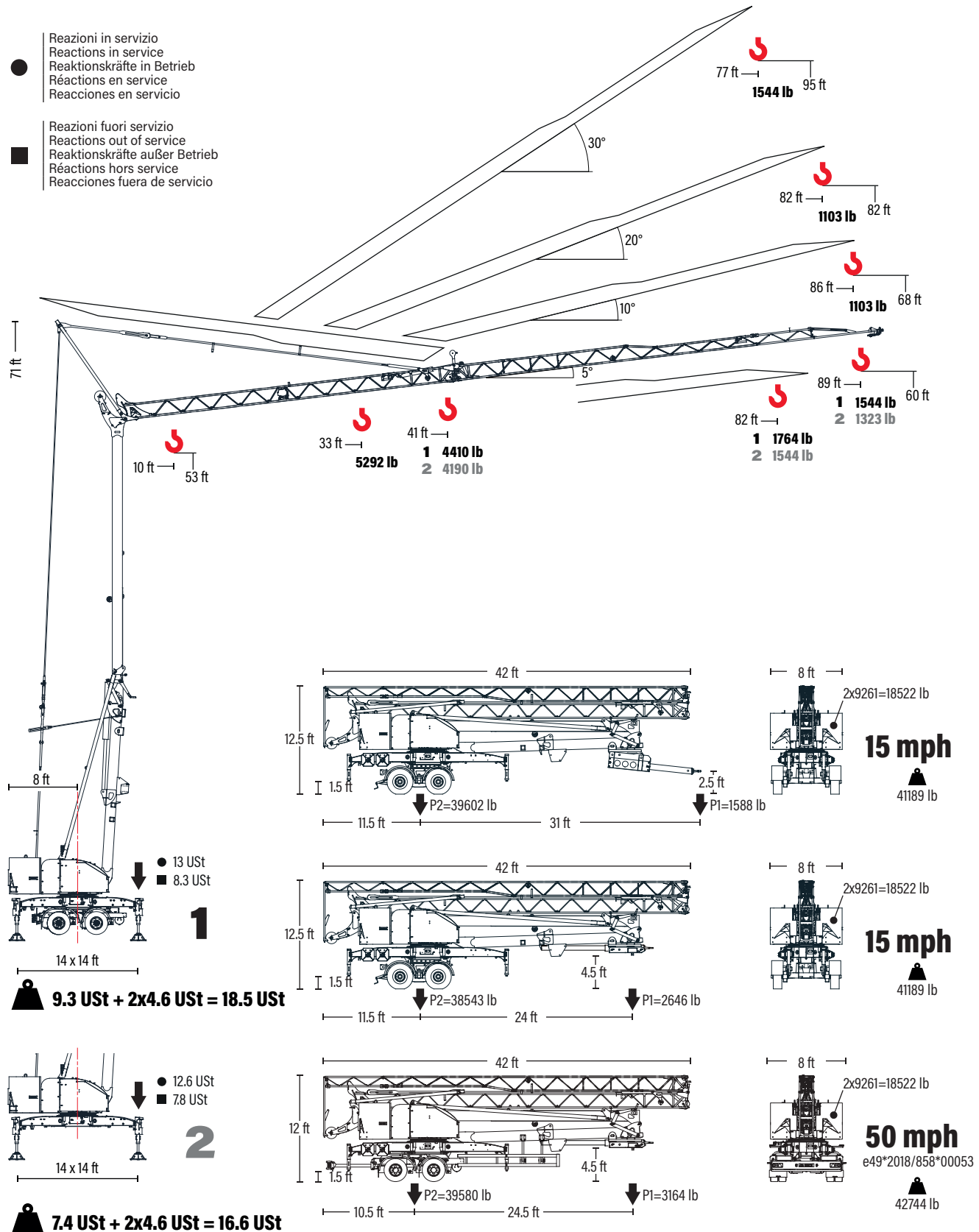


Diagramma di portate

Load diagram - Lastkurven - Courbes de charges - Curvas de cargas

1

5°

400 V - 230 V		ft	10	33	39	41	46	52	59	66	72	79	82	85	89
89 ft	5292 lb - 32 ft	lb	5292	5225	4164	3960	3447	2930	2539	2233	1988	1786	1698	1618	1544
82 ft	5292 lb - 33 ft	lb	5292		4312	4101	3571	3036	2633	2317	2063	1855	1764		
41 ft	5292 lb - 35 ft	lb	5292		4631	4410									

10°

400 V - 230 V		ft	10	86
86 ft	1103 lb - 86 ft	lb	1103	

20°

400 V - 230 V		ft	10	82
82 ft	1103 lb - 82 ft	lb	1103	

30°

400 V - 230 V		ft	10	33	39	46	52	59	66	72	72	77
77 ft	5292 lb - 8.8 m	lb	5292	4498	3572	2955	2492	2161	1896	1698	1676	1544
72 ft	5292 lb - 9 m	lb	5292	4653	3704	3065	2602	2249	1985	1764		

2

5°

400 V - 230 V		ft	10	33	39	41	46	52	59	66	72	79	82	85	89
89 ft	5292 lb - 29 ft	lb	5292	4555	3624	3445	2994	2540	2197	1929	1713	1536	1459	1388	1323
82 ft	5292 lb - 30 ft	lb	5292	4792	3815	3627	3154	2678	2318	2036	1810	1624	1544		
41 ft	5292 lb - 34 ft	lb	5292		4410	4190									

10°

400 V - 230 V		ft	10	86
86 ft	1103 lb - 86 ft	lb	1103	

20°

400 V - 230 V		ft	10	82
82 ft	1103 lb - 82 ft	lb	1103	



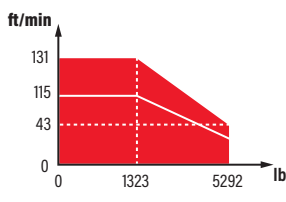
30°


400 V - 230 V		ft	10	33	39	46	52	59	66	72	72	77
77 ft	5292 lb - 29 ft	lb	5292	4498	3572	2955	2492	2161	1896	1698	1676	1544
72 ft	5292 lb - 30 ft	lb	5292	4653	3704	3065	2602	2249	1985	1764		

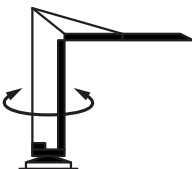
727 RBI-FA


Meccanismi

Mechanisms - Antriebe - mécanismes - Mecanismos

	V9.32 6.6 kW							
		400 V	ft/min	13	43		105	131
			lb	5292	5292		2205	1323
		230 V	ft/min	↑ 13	36		82	115
lb	↓ 13		43	105	131			

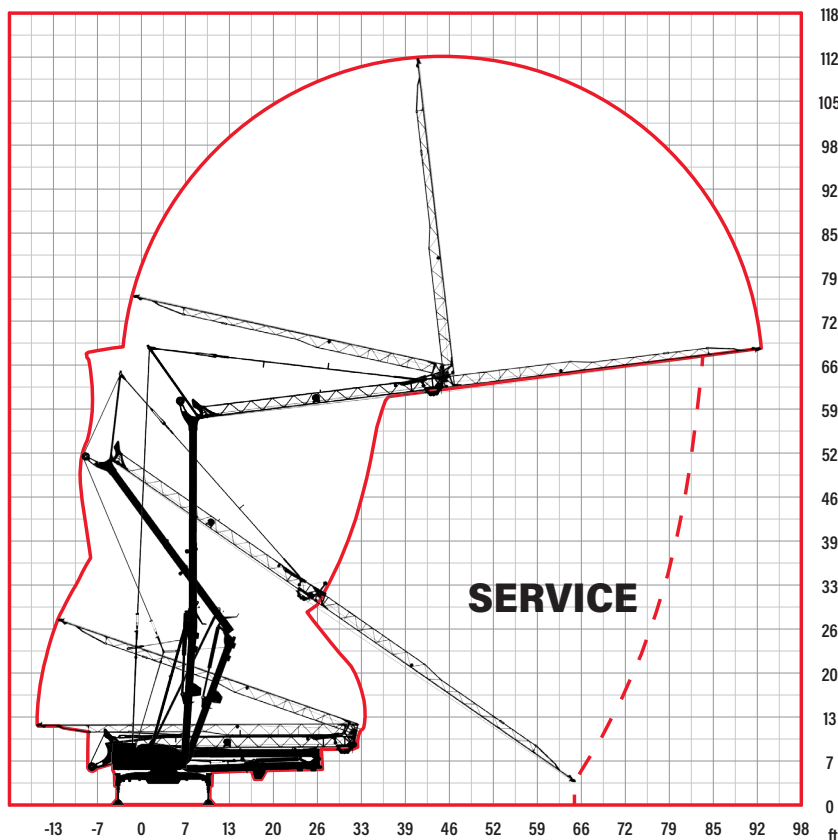
	0 <-> 30 m/min 2.2 kW
-----------------------------------------------------------------------------------	--------------------------

	0 <-> 0.8 rpm 2.2 kW
-----------------------------------------------------------------------------------	-------------------------

	230 V - 50 Hz: 3 kW 4.5 kW 6 kW
	400 V - 50 Hz: 8 kW

Montaggio

Erection- Montage - Montage - Montaje



Documento commerciale non contrattuale.
Per tutte le informazioni tecniche riferirsi alle corrispondenti istruzioni.

This commercial document is not legally binding. For any technical information, please refer to the corresponding instructions.

Unverbindliches Vertriebsdokument.
Für technische Informationen, siehe die entsprechenden Anweisungen.

Ce document commercial n'est pas juridiquement contraignant. Pour toute information technique, veuillez vous référer aux instructions correspondantes.

Documento comercial no contractual.
Para cualquier información técnica, ver la noticia correspondiente.



Rif. 15ICA37B37A0L 04/2024

