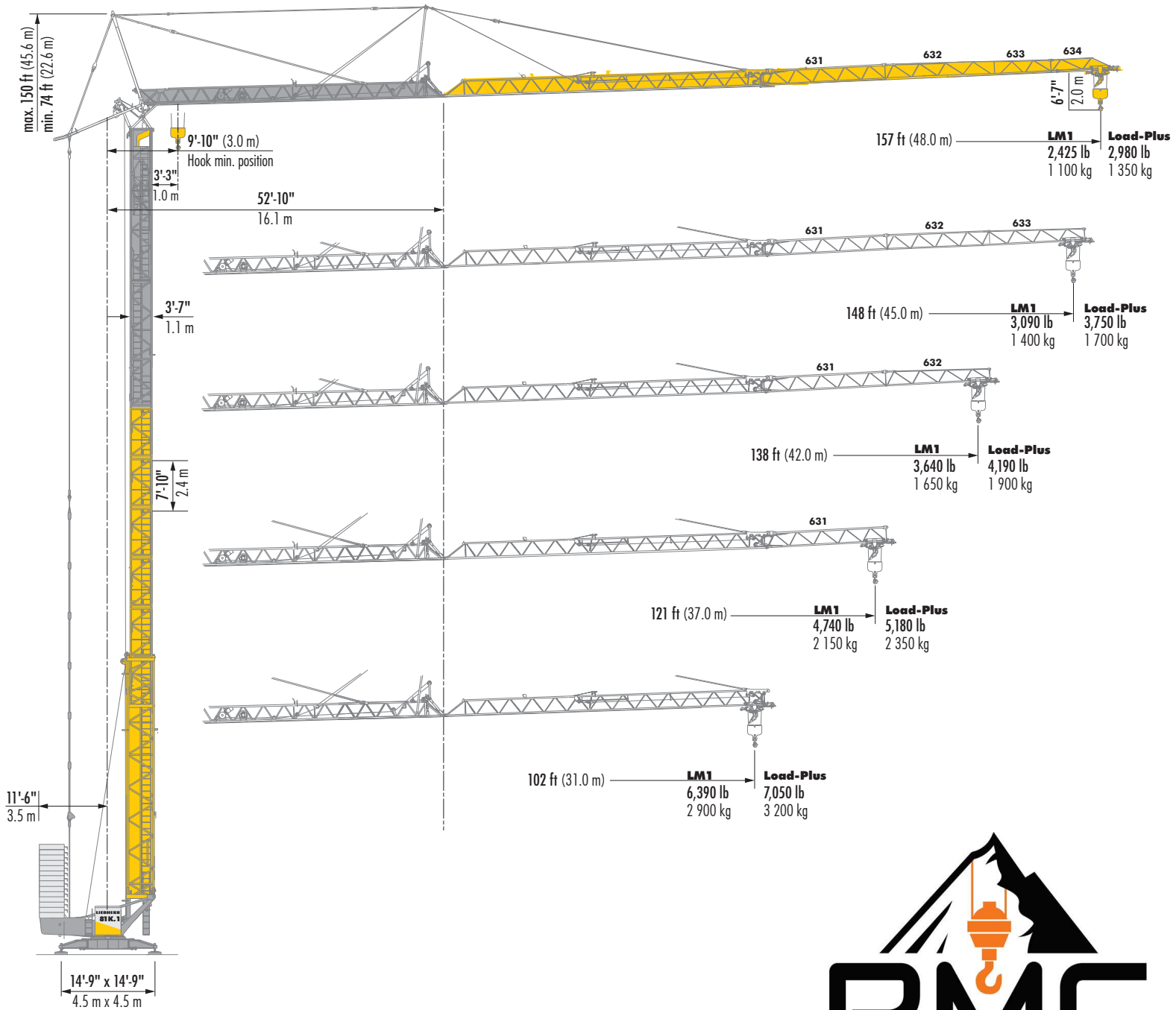


# 81K.1

## LIEBHERR Fast-Erecting Tower Crane



# LIEBHERR 81K.1

## Radius and Capacities

		<b>LM 1</b>																
Hook Radius	Maximum Capacity - Radius	ft m	39	49	59	69	75	82	88	95	102	108	115	121	131	138	148	157
157 ft 48.0 m	13,230 lb - 39 ft 6 000 kg - 12.0 m	lb kg	13,230 6 000	10,185 4 620	8,820 3 730	6,860 3 110	6,150 2 790	5,780 2 530	5,070 2 300	4,650 2 110	4,280 1 940	3,970 1 800	3,680 1 670	3,420 1 550	3,110 1 410	2,910 1 320	2,650 1 200	2,425 1 100
148 ft 45.0 m	13,230 lb - 44 ft 6 000 kg - 13.3 m	lb kg	13,230 6 000	11,510 5 220	9,330 4 230	7,800 3 540	7,010 3 180	6,370 2 890	5,820 2 640	5,340 2 420	4,920 2 230	4,560 2 070	4,230 1 920	3,970 1 800	3,590 1 630	3,370 1 530	3,090 1 400	
138 ft 42.0 m	13,230 lb - 46 ft 6 000 kg - 14.1 m	lb kg	13,230 6 000	12,280 5 570	9,960 4 520	8,360 3 790	7,520 3 410	6,810 3 090	6,220 2 820	5,710 2 590	5,290 2 400	4,894 2 220	4,560 2 070	4,250 1 930	3,860 1 750	3,640 1 650		
121 ft 37.0 m	13,230 lb - 50 ft 6 000 kg - 15.1 m	lb kg	13,230 6 000	13,230 6 000	10,870 4 930	9,150 4 150	8,250 3 740	7,500 3 400	6,860 3 110	6,330 2 870	5,840 2 650	5,420 2 460	5,070 2 300	4,740 2 150				
102 ft 31.0 m	13,230 lb - 53 ft 6 000 kg - 16.3 m	lb kg	13,230 6 000	13,230 6 000	11,840 5 370	9,960 4 520	8,990 4 080	8,180 3 710	7,500 3 400	6,900 3 130	6,390 2 900							

		<b>Load-Plus*</b>																
Hook Radius	Maximum Capacity - Radius	ft m	39	49	59	69	75	82	88	95	102	108	115	121	131	138	148	157
157 ft 48.0 m	13,230 lb - 39 ft 6 000 kg - 12.0 m	lb kg	13,230 6 000	10,650 4 830	8,880 4 030	7,580 3 440	6,880 3 120	6,300 2 860	5,800 2 630	5,360 2 430	4,980 2 260	4,650 2 110	4,340 1 970	4,080 1 850	3,730 1 690	3,510 1 590	3,220 1 460	2,980 1 350
148 ft 45.0 m	13,230 lb - 44 ft 6 000 kg - 13.3 m	lb kg	13,230 6 000	11,820 5 360	9,920 4 500	8,530 3 870	7,780 3 530	7,140 3 240	6,590 2 990	6,110 2 770	5,690 2 580	5,310 2 410	4,980 2 260	4,700 2 130	4,300 1 950	4,060 1 840	3,750 1 700	
138 ft 42.0 m	13,230 lb - 46 ft 6 000 kg - 14.1 m	lb kg	13,230 6 000	12,430 5 640	10,380 4 710	8,880 4 030	8,090 3 670	7,430 3 370	6,830 3 100	6,330 2 870	5,890 2 670	5,510 2 500	5,160 2 340	4,850 2 200	4,430 2 010	4,190 1 900		
121 ft 37.0 m	13,230 lb - 50 ft 6 000 kg - 15.1 m	lb kg	13,230 6 000	13,230 6 000	11,110 5 040	9,500 4 310	8,660 3 930	7,940 3 600	7,320 3 320	6,770 3 070	6,370 2 860	5,890 2 670	5,510 2 500	5,180 2 350				
102 ft 31.0 m	13,230 lb - 53 ft 6 000 kg - 16.3 m	lb kg	13,230 6 000	13,230 6 000	12,060 5 470	10,410 4 720	9,520 4 320	8,770 3 980	8,140 3 690	7,560 3 430	7,050 3 200							

\*Load-Plus increases the lifting capacity by up to 20% with restrictions including wind speeds, reduced drive speeds and single function only operation. Please consult the 81K.1 Operations Manual for further details.